

Patience

Understanding

Flexibility

# PROVIDENT CHARTER SCHOOL

## Fall 2020 Reopening Plan Town Hall Meeting

August 6, 2020  
6:30 PM





Patience

Understanding

Flexibility

## AGENDA

- Introduction
- Review reopening plan
- Q & A - please hold all questions until the end



Patience

Understanding

Flexibility

## REMINDER

- All decisions made by PCS are to ensure the health and safety of the students, staff, parents and community.
- All decisions made by PCS are derived from CDC guidelines and PDE and will continue to evolve as more information and direction are provided.
- Please understand the information we are receiving is changing weekly.

Patience

Understanding

Flexibility

# Communications



**PROVIDENT**  
CHARTER SCHOOL

# Communications

School Website: [providentcharterschool.org](http://providentcharterschool.org)

Constant Contact: Email- Please check regularly



**PROVIDENT**  
CHARTER SCHOOL

Patience

Understanding

Flexibility

Patience

Understanding

Flexibility

## Staff Training



**PROVIDENT**  
CHARTER SCHOOL

Patience

Understanding

Flexibility

# Staff Training

Health and Safety Plan:

New Staff August 11th- 7:45 AM

New & Returning Staff August 13th-7:45 AM



**PROVIDENT**  
CHARTER SCHOOL

Patience

Understanding

Flexibility

## SAFETY PRECAUTIONS



**PROVIDENT**  
CHARTER SCHOOL



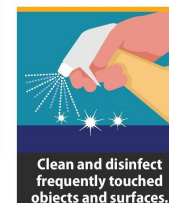
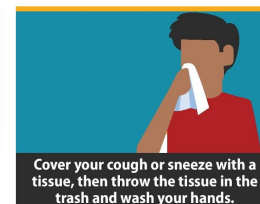
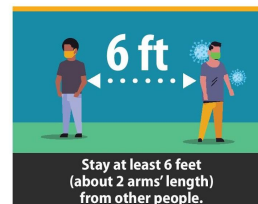


# SAFETY PRECAUTIONS

- Staff and students will be trained on safety precautions and procedures.
- Face coverings (masks and face shields) will be available at the school although students and staff may wear their own.

## Stop the Spread of Germs

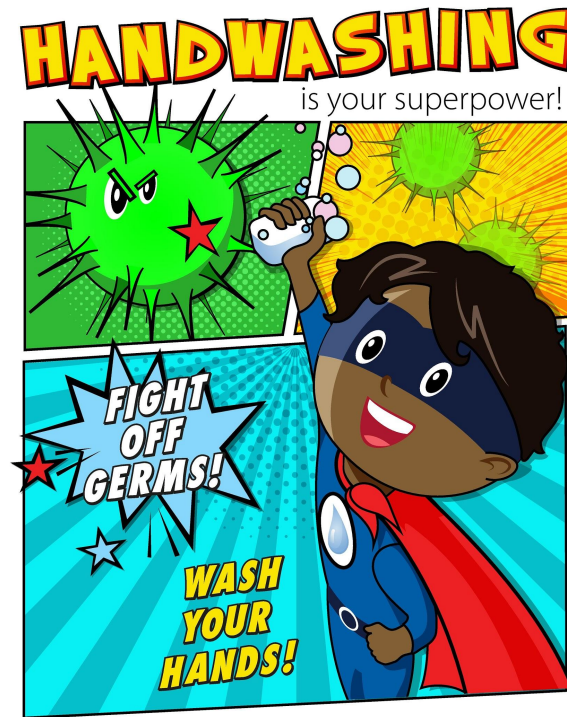
Help prevent the spread of respiratory diseases like COVID-19.





## SAFETY PRECAUTIONS

- Signs from the CDC have been displayed to encourage proper safety precautions.
- Hand sanitizing and refillable water stations will be installed.





Patience

Understanding

Flexibility

## SAFETY PRECAUTIONS

- Thermal imaging scanners have been placed at two entrance points for temperature checks.
- All classrooms and instructional spaces now contain a certified air purifier.





Patience

Understanding

Flexibility

## SAFETY PRECAUTIONS

- Daily cleaning and sanitation procedures have been established.
- A 3-month order of cleaning supplies has been purchased.





Patience

Understanding

Flexibility

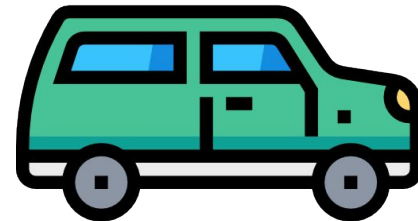
## VISITOR POLICY

- All meetings will be held virtually if possible.
- If visitors need to enter the building, meetings will be scheduled *at least* 24 hours in advance and face coverings will be required.
- Visitors will complete a [questionnaire](#) to screen symptoms & exposure prior to entering the building.



## DROP-OFF/PICK-UP REHEARSAL

- To adhere to CDC guidelines, drop-off and pick-up systems have been altered.
- A practice run is scheduled for **Saturday, August 22nd at 9:00 AM.**



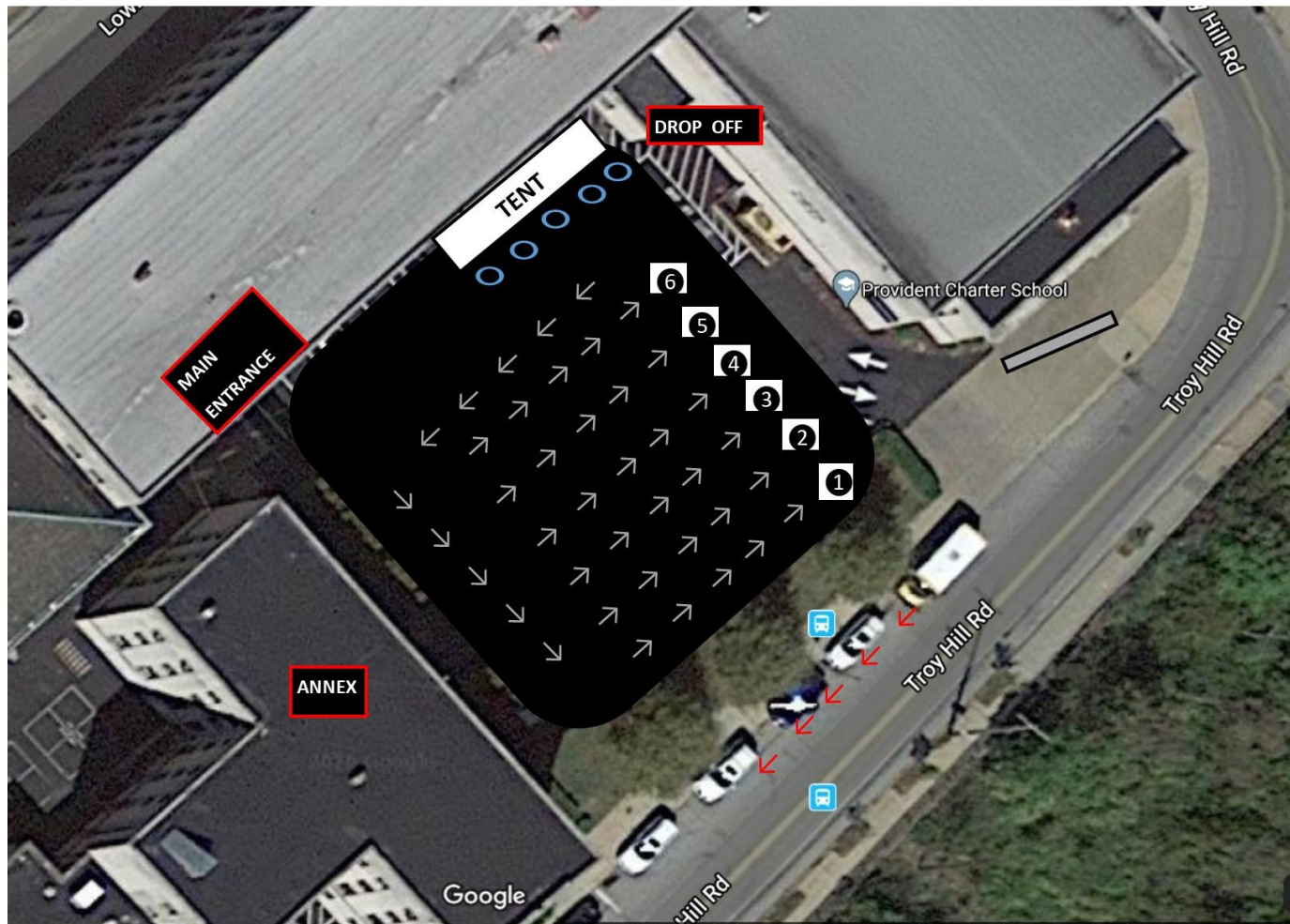




Patience

Understanding

Flexibility



Patience

Understanding

Flexibility

# INSTRUCTIONAL LEARNING OPTIONS



**PROVIDENT**  
CHARTER SCHOOL





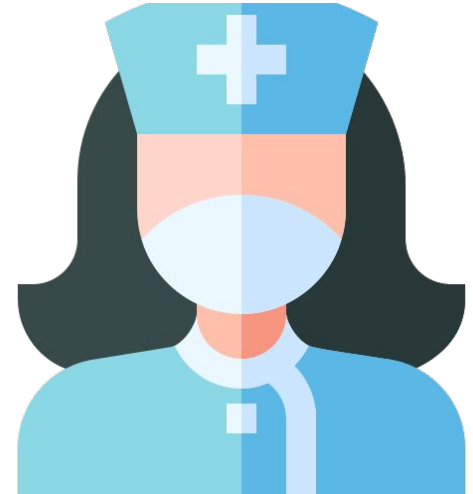
## HYBRID MODEL

- Families have the opportunity to OPT-IN to Remote Learning **daily** via Google Forms.
- Families also may [OPT-IN to Remote Learning](#) for an **extended period of time**. The School Nurse will coordinate with these families.

Patience

Understanding

Flexibility





## HYBRID MODEL

Patience

Understanding

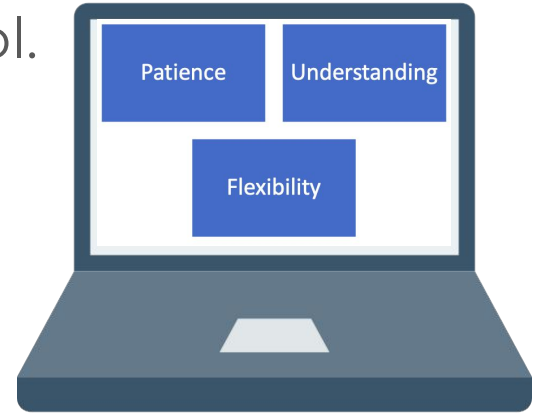
Flexibility

- Our current numbers include:
  - Percentage of **Remote Learning Students** → **36.13%**
  - Percentage of **Traditional Learning Students** → **63.87%**
  - Number of Surveys Collected: **155**



## HYBRID MODEL

- Students will have access to a device both at home and at school.
- Teachers will continue to use Google Classroom as an instructional tool.
- Teachers will provide live instruction using Google Meet.
- Live Wilson Instruction will be provided.





## HYBRID MODEL

- Delivery of instructional content will be a combination of both synchronous and asynchronous learning.
- Attendance and participation during live lessons is required.

Patience

Understanding

Flexibility





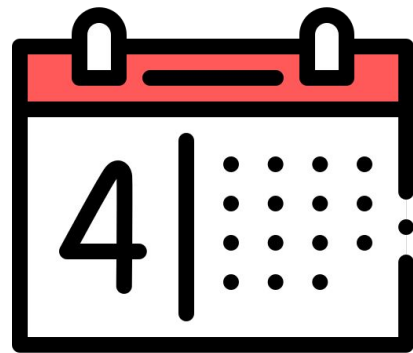
## HYBRID MODEL

- A [schedule](#) for live student lessons is available and generally follows the in-school schedule.
- If a student has ELA/Wilson in the morning at school, they will have a 1-2 hour block in the morning. If they have Math/Science in the afternoon, they will have a 1-2 hour block in the afternoon.

Patience

Understanding

Flexibility





Patience

Understanding

Flexibility

## HYBRID MODEL

- Approximately 2 hours per day of live instruction is scheduled for grades 2-4. Some independent or asynchronous learning may occur.
- Approximately 2-3 hours per day of live instruction is scheduled for for grades 5-6, and 3 hours per day for grades 7-8, as well as up to another hour of independent or asynchronous learning.
- Students will have choice of Specials in the Remote Learning setting.

Patience

Understanding

Flexibility

# TRADITIONAL LEARNING



**PROVIDENT**  
CHARTER SCHOOL



Patience

Understanding

Flexibility

## TRADITIONAL LEARNING

- Student arrival/dismissal will be organized to follow the CDC guidelines.
- Students and staff will have temperature screened daily upon arrival. If temperature is above 100.4 F they will be placed in isolation, parent(s) will be called for students, and a guidance letter will be provided.







## TRADITIONAL LEARNING

- Google Classroom and instructional technology will be part of daily routine should students need to move into remote learning unexpectedly.
- Students will receive all course content as they have in the past; they will not transition for afternoon classes. They will transition for special area classes.





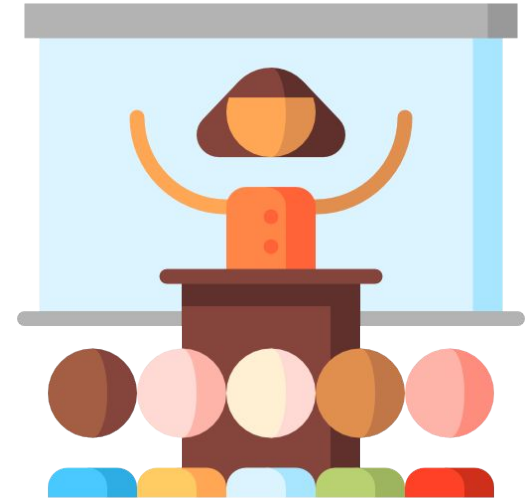
## TRADITIONAL LEARNING

- Students will remain in core classes throughout the day to minimize transitions.
- Teachers will rotate between classes.
- Lunch will be served in classrooms to minimize transitions and to decrease contact between larger groups.

Patience

Understanding

Flexibility





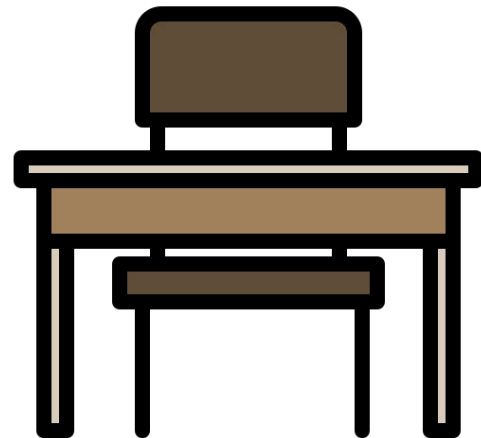
## TRADITIONAL LEARNING

- Rooms are arranged to increase spacing between students and staff.
- Desks will be placed 6 feet apart.
- 6-foot Distancers will be placed in classrooms and hallways.

Patience

Understanding

Flexibility





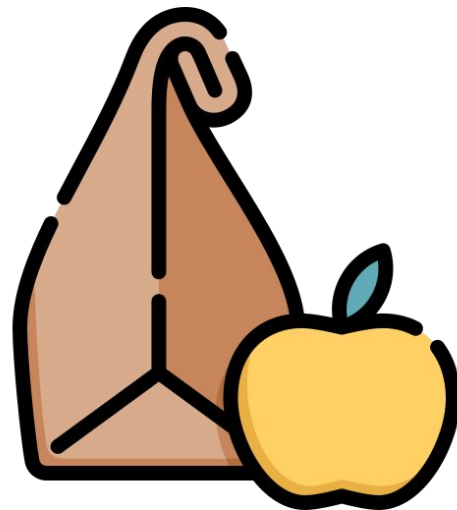
Patience

Understanding

Flexibility

## TRADITIONAL LEARNING

- To eliminate materials entering the building, we ask that you please do not send backpacks or lunch boxes. If you pack a lunch, please make sure everything is disposable.
- Lockers will not be available. Students may place their jackets on the back of their chairs.





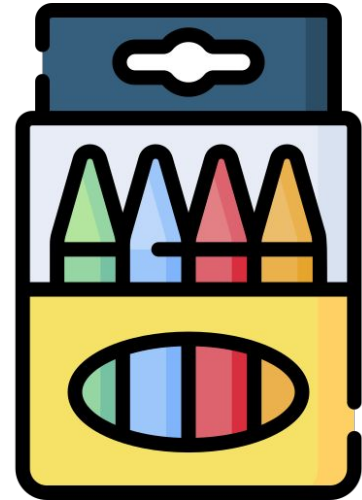
## TRADITIONAL LEARNING

- Individual Supply Kits have been created for students which include items such as a pencil case, pencils, a big eraser, a pencil sharpener, crayons, colored pencils, scissors and a glue stick.

Patience

Understanding

Flexibility





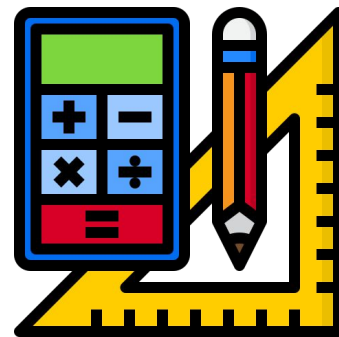
Patience

Understanding

Flexibility

## TRADITIONAL LEARNING

- If students are working with **shared supplies** (i.e. blocks, manipulatives, art supplies, makerspace equipment) it will be placed in a labeled container.
- All items will be cleaned before using it with another student.





## 21st CCLC After School Program

- Will always model the same protocol as the school day
- All after school programs (not interventions) will be virtual to allow all students remote and traditional to participate in any program they'd like. It also limits the number of people entering the PCS bubble

Patience

Understanding

Flexibility



Funded in full or in part  
With a grant provided by the  
Pennsylvania Department of  
Education



Patience

Understanding

Flexibility

## How do I register my student for the after school program?

- [Registration forms](#)
- [Continued registration forms](#)
- Both forms must be completed, and families must attend a meeting with the after school program director prior to the students start date.





Patience

Understanding

Flexibility

# CONCLUSION



**PROVIDENT**  
CHARTER SCHOOL



Patience

Understanding

Flexibility

## ACTION ITEMS

- Families can OPT-IN to Remote Learning for an extended period of time. We ask that all families complete this form regardless of their decision. Please provide us this information by **August 10th**.
- Please contact your principal if you have any remaining questions.
- Please be **Flexible**, **Patient**, and **Understanding** with everyone at Provident as the information is changing weekly - thank you!

Patience

Understanding

Flexibility

# QUESTIONS & ANSWERS

**PROVIDENT CHARTER SCHOOL**

**Fall 2020 Reopening Plan**  
**Town Hall Meeting**



Patience

Understanding

Flexibility



**PROVIDENT**  
CHARTER SCHOOL