

PROVIDENT CHARTER SCHOOL

Fall 2020 Reopening Plan Town Hall Meeting

July 30, 2020
6:30 PM





AGENDA

- Introduction
- Review reopening plan
- Q & A - please hold all questions until the end



REMINDER

- All decisions made by PCS are to ensure the health and safety of the students, staff, parents and community.
- All decisions made by PCS are derived from CDC guidelines and PDE and will continue to evolve as more information and direction are provided.
- Please understand the information we are receiving is changing weekly.



DEFINITIONS & TERMS

- **Close Contact:** *Someone who was within 6 feet of an infected person for at least 15 minutes starting from 2 days before illness onset (or, for asymptomatic patients, 2 days prior to specimen collection) until the time the patient is isolated.*
- **Exposure:** Having come into contact with a cause of, or possessing a characteristic that is a determinant of, a particular health problem.
- **Isolation:** separates sick people with a contagious disease from people who are not sick.
- **Quarantine:** separates and restricts the movement of people who were exposed to a contagious disease to see if they become sick.

Definitions retrieved from <https://www.cdc.gov/coronavirus/2019-ncov/php/contact-tracing/contact-tracing-plan/appendix.html#Key-Terms>



COVID-19 SYMPTOMS

- Fever
- Cough
- Shortness of breath or difficulty breathing
- Chills
- Repeated shaking with chills
- Muscle pain
- Headache
- Sore throat
- New loss of taste or smell
- Runny Nose
- Nausea
- Diarrhea

Definitions retrieved from: <https://www.cdc.gov/coronavirus/2019-ncov/symptoms-testing/symptoms.html>

WHAT TO DO IF STUDENT HAD CONTACT WITH A CONFIRMED COVID-19 CASE?

No Close Contact and the student is asymptomatic

No further action is needed.

Close Contact/Exposure

- Student is sent to nurse immediately
- Parents are notified to pick up student ASAP
- Student is isolated
- Nurse must follow up with family twice during quarantine period

If the student is quarantined for 14 days *and* remains symptom free, he/she may return to school after 14 days.

If the student develops symptoms, he/she should seek medical attention and isolate for an additional 10 days.

School Must:

- Follow established communications plan to notify staff, students and families.
- Notify Allegheny County Health Department
- Investigate, contact trace, and establish what other staff members and/or students were in close contact with sick person a
- Clean and disinfect the area(s) where the staff member was present.
- Identify corrective actions, if any, that can be taken for the future.

Student Must:

- Stay home, self-isolate
- Seek medical attention
- Remain out of school until:
 - at least 10 days have passed since symptoms first appeared,
 - AND remain symptom free for at least 3 days (72 hours) (defined as resolution of fever without the use of fever-reducing medications)
- And other symptoms have improved.
- School may require clearance from a healthcare provider to return to school.

WHAT TO DO IF A STUDENT IS SICK?

Student is exhibiting symptoms consistent with COVID-19.

Student is sick, but symptoms exhibited are not consistent with COVID-19.

Student follows protocols consistent with attendance policy.

- Nurse notifies Principal and Pandemic Safety Officer
- Principal notifies CEO

- Student is sent to nurse immediately
- Parents are notified to pick up student ASAP
- Student is isolated
- Parents are advised to seek medical attention
- Nurse must follow up with family every 24 hours until a diagnosis or test results are received

The Student IS DIAGNOSED/
CONFIRMED with COVID-19.

The Student IS NOT Diagnosed with
Covid-19

Student Must:

- Stay home, self-isolate
- Seek medical attention
- Remain home until:
 - at least 10 days have passed since symptoms first appeared,
 - AND remain symptom free for at least 3 days (72 hours) (defined as resolution of fever without the use of fever-reducing medications)
 - AND other symptoms have improved.
- School may require clearance from a healthcare provider to return to school.

School Must:

- Follow established communications plan to notify staff, students and families.
- Notify Allegheny County Health Department
- Investigate, contact trace, and establish what other students and/or staff members were in close contact with sick person
- Clean and disinfect the area(s) where the student was present.
- Identify corrective actions, if any, that can be taken for the future.

Student Must:

- Stay home, self-isolate
- Seek medical attention
- Remain out of work until:
 - at least 10 days have passed since symptoms first appeared,
 - AND remain symptom free for at least 3 days (72 hours) (defined as resolution of fever without the use of fever-reducing medications)
 - AND other symptoms have improved.

School Must:

- Follow established communications plan to notify staff, students and families.
- Clean and disinfect the area(s) where the student was present.
- Identify corrective actions, if any, that can be taken for the future.

SAFETY PRECAUTIONS



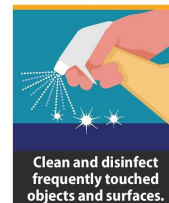
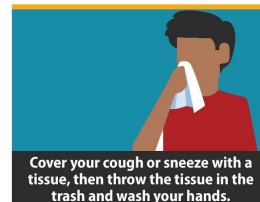


SAFETY PRECAUTIONS

- Staff and students will be trained on safety precautions and procedures.
- Face coverings (masks and face shields) will be available at the school although students and staff may wear their own.

Stop the Spread of Germs

Help prevent the spread of respiratory diseases like COVID-19.



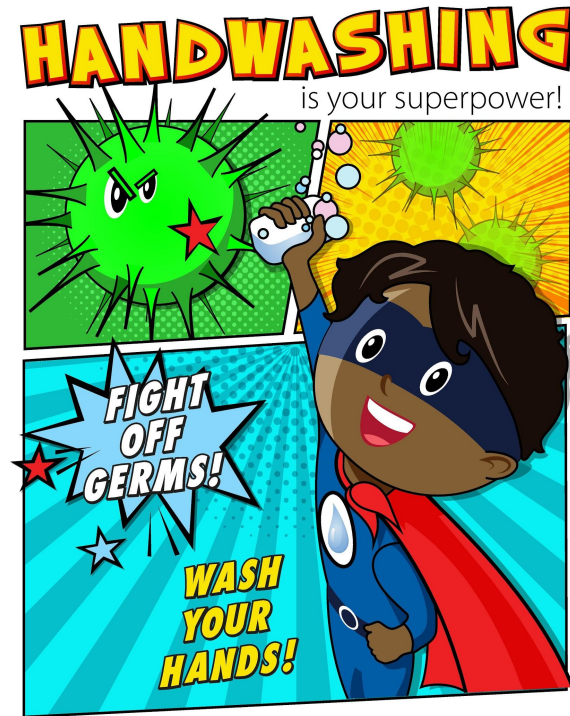
[cdc.gov/coronavirus](https://www.cdc.gov/coronavirus)

(PHOTO: May 15, 2020 1:00 AM)



SAFETY PRECAUTIONS

- Signs from the CDC have been displayed to encourage proper safety precautions.
- Hand sanitizing and refillable water stations will be installed.



cdc.gov/coronavirus



SAFETY PRECAUTIONS

- Thermal imaging scanners have been placed at two entrance points for temperature checks.
- All classrooms and instructional spaces now contain a certified air purifier.

CERTIFICATE																															
<div><div>Independently tested by</div><div> airmidhealthgroup.com</div></div>																															
The following products have been tested by airmid healthgroup Ltd as outlined in report(s) ASCR092102v2																															
Product Description	AeraMax Pro AMIII																														
Manufacturer	Fellowes																														
Certification Number	AHGC: 92102/15/05/08/2080/01																														
Validation Period	1 Year																														
Outline of Test Method	Determination of removal efficiency of Influenza A (H1N1) following aerosolisation of the virus into a 20 m ³ environmental test chamber.																														
Additional SKUs	AeraMax Pro AMIII/S, AM3 PC, AM3S PC AeraMax Pro AMIV, AMIVS, AM4 PC, AM4S PC																														
RESULTS																															
The Fellowes AeraMax Pro has been shown to remove 99.9% of airborne virus within 35 minutes of operation																															
<p>Influenza A percentage reduction over time with and without the AeraMax PRO AM III Air Purifier operating.*</p>  <table border="1"><caption>Approximate data from the graph</caption><thead><tr><th>Time Interval</th><th>Control</th><th>Setting B</th><th>Setting C</th><th>Setting D</th></tr></thead><tbody><tr><td>-20 to -5 min</td><td>100</td><td>100</td><td>100</td><td>100</td></tr><tr><td>0 to 15 min</td><td>100</td><td>100</td><td>~60</td><td>~40</td></tr><tr><td>20 to 35 min</td><td>100</td><td>100</td><td>~40</td><td>~10</td></tr><tr><td>40 to 55 min</td><td>100</td><td>100</td><td>~35</td><td>~5</td></tr><tr><td>60 to 75 min</td><td>100</td><td>100</td><td>~30</td><td>~2</td></tr></tbody></table> <p>*Results represent the average of five runs. Device settings A: Ionizer ON and filter low speed; device setting B: Ionizer off and filter at low speed; device setting C: Ionizer on and filter at high speed.</p>		Time Interval	Control	Setting B	Setting C	Setting D	-20 to -5 min	100	100	100	100	0 to 15 min	100	100	~60	~40	20 to 35 min	100	100	~40	~10	40 to 55 min	100	100	~35	~5	60 to 75 min	100	100	~30	~2
Time Interval	Control	Setting B	Setting C	Setting D																											
-20 to -5 min	100	100	100	100																											
0 to 15 min	100	100	~60	~40																											
20 to 35 min	100	100	~40	~10																											
40 to 55 min	100	100	~35	~5																											
60 to 75 min	100	100	~30	~2																											
 Dr Bruce Mitchell Chairman/CEO airmid healthgroup Ltd	Dated 16/5/19																														
<div><div>Airmid Health Group Ltd Unit 17 Trinity Enterprise Campus Mackey Street Dublin 2 Tel +353 1 633 6820 email info@airmidhealthgroup.com www.airmidhealthgroup.com</div><div>Referenced to Report No(s): ASCR092102v2</div><div>Certification not valid without above official seal</div></div>																															



SAFETY PRECAUTIONS

- Daily cleaning and sanitation procedures have been established.
- A 3-month order of cleaning supplies has been purchased.





VISITOR POLICY

- All meetings will be held virtually if possible.
- If visitors need to enter the building, meetings will be scheduled *at least* 24 hours in advance and face coverings will be required.
- Visitors will complete a [questionnaire](#) to screen symptoms & exposure prior to entering the building.



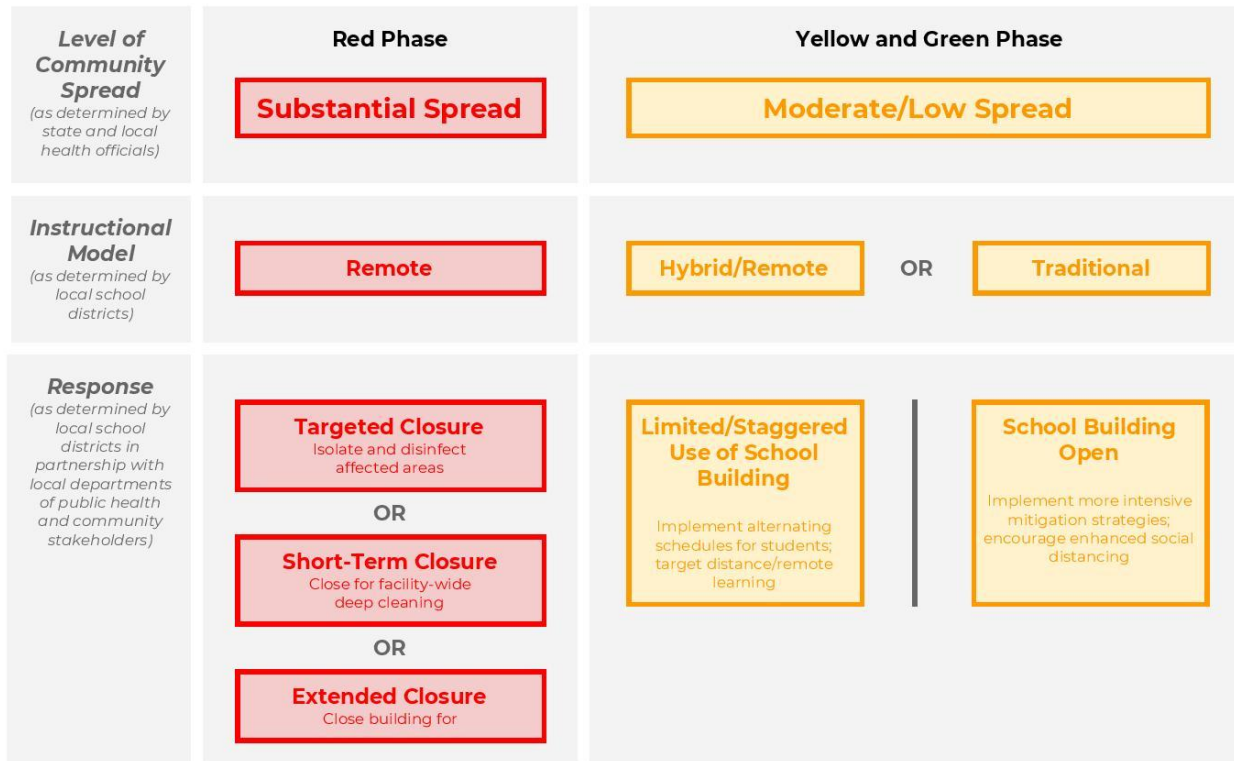
INSTRUCTIONAL LEARNING OPTIONS



PROVIDENT
CHARTER SCHOOL



RESPONSE DECISION TREE



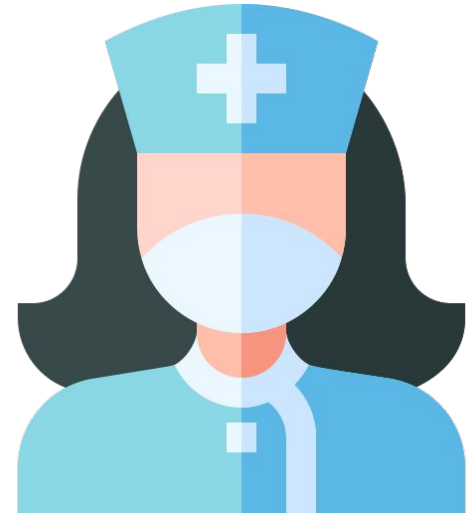
HYBRID MODEL





HYBRID MODEL

- Families have the opportunity to OPT-IN to Remote Learning **daily** via [Google Forms](#).
- Families also may OPT-IN to [Remote Learning](#) for an **extended period of time**. The School Nurse will coordinate with these families.





HYBRID MODEL

- Students will have access to a device both at home and at school.
- Teachers will continue to use Google Classroom as an instructional tool.
- Teachers will provide live instruction using Google Meet.
- Live Wilson Instruction will be provided.





HYBRID MODEL

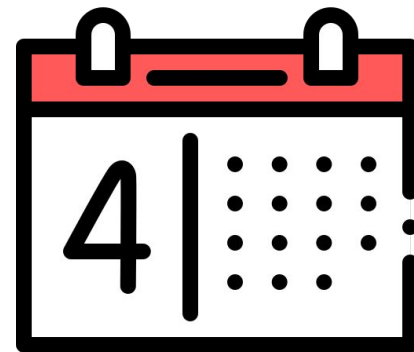
- Delivery of instructional content will be a combination of both synchronous and asynchronous learning.
- Attendance and participation during live lessons is required.





HYBRID MODEL

- A [schedule](#) for live student lessons is available and generally follows the in-school schedule.
- If a student has ELA/Wilson in the morning at school, they will have a 1-2 hour block in the morning. If they have Math/Science in the afternoon, they will have a 1-2 hour block in the afternoon.





HYBRID MODEL

- Approximately 2 hours per day of live instruction is scheduled for grades 2-4. Some independent or asynchronous learning may occur.
- Approximately 2-3 hours per day of live instruction is scheduled for for grades 5-6, and 3 hours per day for grades 7-8, as well as up to another hour of independent or asynchronous learning.
- Students will have choice of Specials in the Remote Learning setting.

TRADITIONAL LEARNING





TRADITIONAL LEARNING

- Student arrival/dismissal will be organized to follow the CDC guidelines.
- Students and staff will have temperature screened daily upon arrival. If temperature is above 100.4 F they will be placed in isolation, parent(s) will be called for students, and a guidance letter will be provided.





TRADITIONAL LEARNING

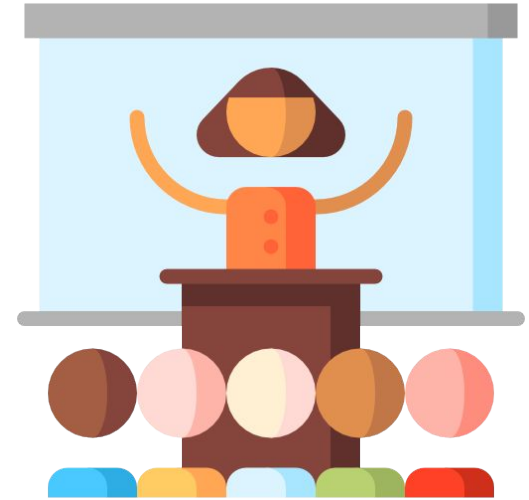
- Google Classroom and instructional technology will be part of daily routine should students need to move into remote learning unexpectedly.
- Students will receive all course content as they have in the past; they will not transition for afternoon classes. They will transition for special area classes.





TRADITIONAL LEARNING

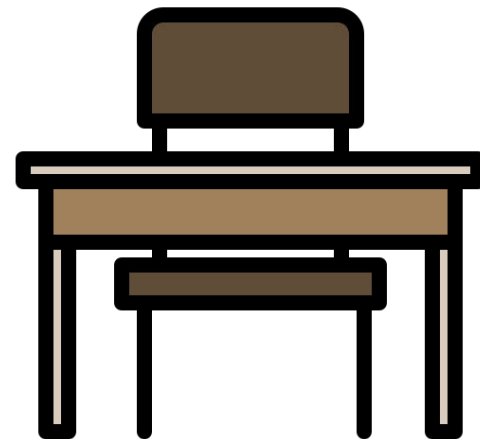
- Students will remain in core classes throughout the day to minimize transitions.
- Teachers will rotate between classes.
- Lunch will be served in classrooms to minimize transitions and to decrease contact between larger groups.





TRADITIONAL LEARNING

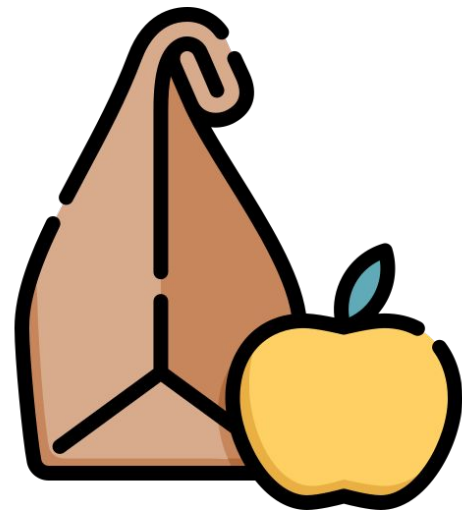
- Rooms are arranged to increase spacing between students and staff.
- Desks will be placed 6 feet apart.
- 6-foot Distancers will be placed in classrooms and hallways.





TRADITIONAL LEARNING

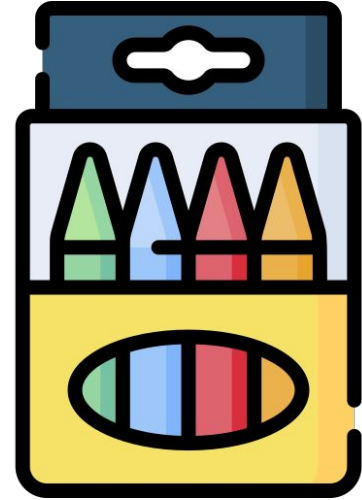
- To eliminate materials entering the building, we ask that you please do not send backpacks or lunch boxes. If you pack a lunch, please make sure everything is disposable.
- Lockers will not be available. Students may place their jackets on the back of their chairs.





TRADITIONAL LEARNING

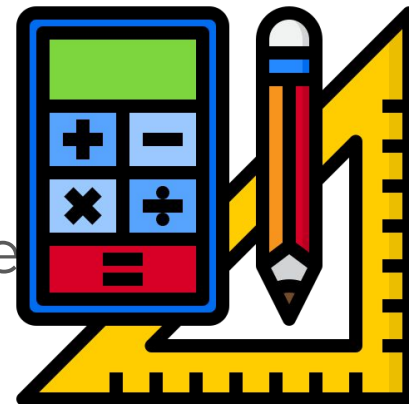
- Individual Supply Kits have been created for students which include items such as a pencil case, pencils, a big eraser, a pencil sharpener, crayons, colored pencils, scissors and a glue stick.





TRADITIONAL LEARNING

- If students are working with **shared supplies** (i.e. blocks, manipulatives, art supplies, makerspace equipment) it will be placed in a labeled container.
- All items will be cleaned before using it with another student.



21st CCLC AFTER-SCHOOL PROGRAM



***Funded in full or in part with a grant provided by the
Pennsylvania Department of Education***





21st CCLC AFTER-SCHOOL PROGRAM

- The After-School Program begins Tuesday, September 8, 2020.
- Prior to the start of the program, all After-School families must attend a **mandatory virtual meeting**. Multiple meeting dates and times will be available and communicated with families at a later date.





21st CCLC AFTER-SCHOOL PROGRAM

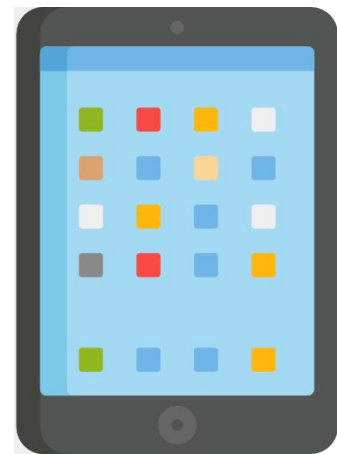
- The After-School Program will follow the same Learning Options outlined in the Response Decision Tree - Traditional or Remote.
- Families who OPT-IN for an **extended period of time** must complete this [form](#).





21st CCLC AFTER-SCHOOL PROGRAM

- Traditional Learning for the After-School Program will follow the same guidelines and procedures during the traditional school day.
- Families will have the same opportunity to OPT-IN to Remote Learning Daily for the After-School Program via [Google Forms](#).





21st CCLC AFTER-SCHOOL PROGRAM

- Remote After-School students will have a scheduled intervention time based on their specific grade level.
- After-School teachers will continue to instruct through Google Classroom and will conduct live lessons for all interventions and programming.



CONCLUSION





ACTION ITEMS

- Families can [OPT-IN to Remote Learning](#) for an extended period of time. We ask that all families complete this form regardless of their decision. Please provide us this information by **August 10th**.
- Please contact your principal if you have any remaining questions.
- Please be **Flexible**, **Patient**, and **Understanding** with everyone at Provident as the information is changing weekly - thank you!

QUESTIONS & ANSWERS

PROVIDENT CHARTER SCHOOL

Fall 2020 Reopening Plan
Town Hall Meeting





PROVIDENT
CHARTER SCHOOL